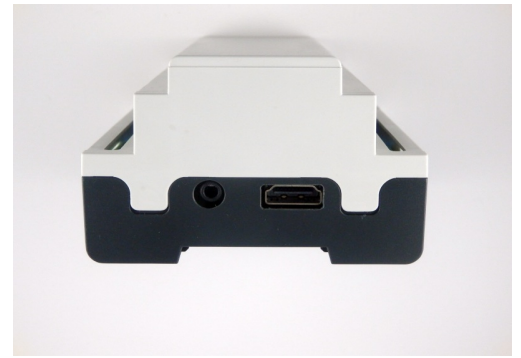


# RaspiBox Open Plus

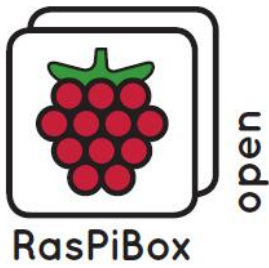
DIN rail enclosure for Raspberry Pi A+, B+ and 2

---



## Features enclosure and prototyping board:

- milled cab rail enclosure (6 modules)
- for EN50022 DIN rails
- prototyping plate - fits perfectly in the enclosure
- 2x 2-pin terminal blocks
- 2x 3-pin terminal blocks
- 40 pole socket for the Raspberry Pi A+ and B+
- SSOP and SOIC breakout area for integrated circuits
- 0805 and SOT23 breakout area for other SMD parts
- pcb contains a layout for a voltage 5V/1A switching regulator
- for Raspberry Pi model A+, B+ and 2 only
- Vented cover to allow through air flow



# RaspiBox Open Plus

DIN rail enclosure for Raspberry Pi A+, B+ and 2

## Dimensions:

- Outside dimensions: 107mm x 90mm x 58mm (W x H x D)
- Breadboard area: 37mm x 65mm (W x H)

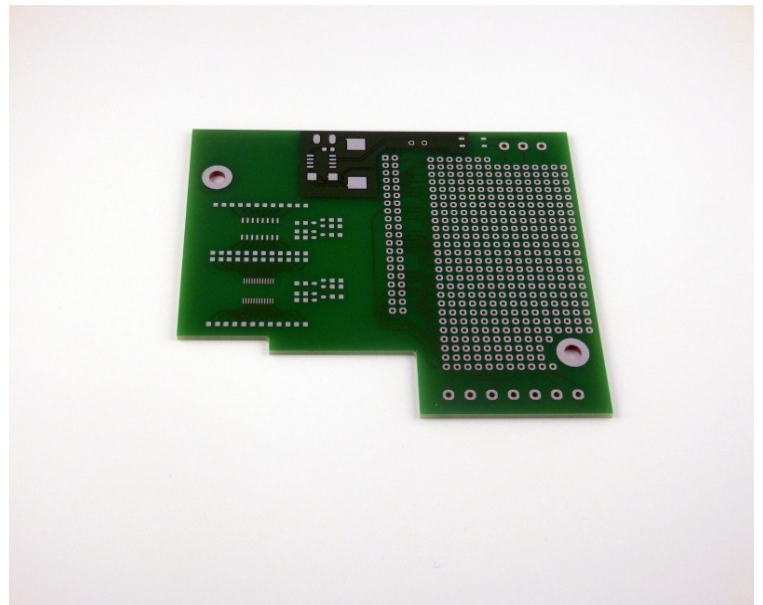
## Features voltage regulator:

- Input voltage: 9 – 35V DC
- Output voltage: 5V DC / 1A DC

## Part number table:

Description	Part-No.
Without parts for voltage regulator	RaspiBox Open Plus Basic
including voltage regulator parts	RaspiBox Open Plus Standard

## Prototyping board:



[www.hwhardsoft.de](http://www.hwhardsoft.de)

**MADE  
IN  
GERMANY**