

RaspiBox Open Plus

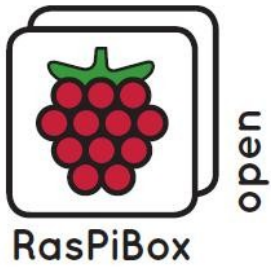
Version 3.x

DIN rail enclosure for Raspberry Pi 4 and 5



Features enclosure and prototyping board:

- milled cab rail enclosure (9 modules)
- for EN50022 DIN rails
- prototyping plate - fits perfectly in the enclosure
- Openings for HDMI on right side
- Openings for SD card and reset button
- Openings for Ethernet and USB sockets
- Pre-assembled pcb
- 2X20 pin female socket for the Raspberry Pi
- 2X20 pin male socket for optional HAT
- Breadboard area with 2x 6 way block terminal
- 5V/4A voltage regulator with 1x 2 way block terminal
- prepared for the installation of an active cooler
- Available with transparent or grey lid



RaspiBox Open Plus

Version 3.x

DIN rail enclosure for Raspberry Pi 4 and 5

Enclosure:

- Outside dimensions: 160mm x 90mm x 58 mm (W x H x D)
- Breadboard area: app 60mm x 50mm (W x H)
- Material: ABS V0
- Finish top shell: light grey
- Finish bottom shell: dark grey

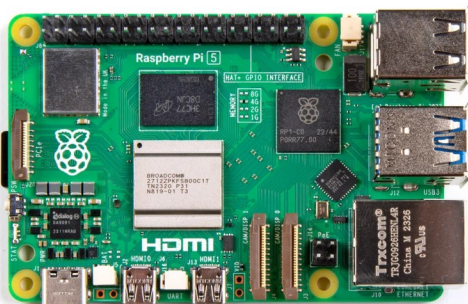
Features optional voltage regulator:

- Input voltage: 9 – 35V DC
- Output voltage: 5V DC / 4A

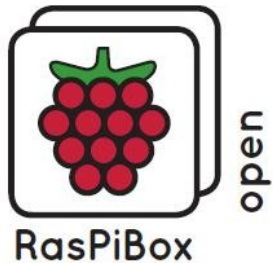
Compatibility :



Raspberry Pi 4 Model B



Raspberry Pi 5



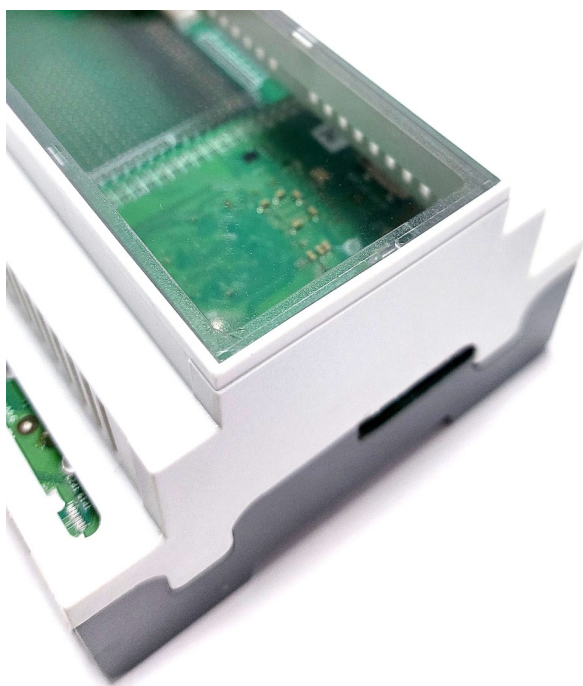
RaspiBox Open Plus

Version 3.x

DIN rail enclosure for Raspberry Pi 4 and 5

Part number table:

| Part-No. | Version | Features |
|----------|-------------|--------------------------|
| RPIBX5G | Grey | - grey lid |
| RPIBX5T | Transparent | - transparent lid |

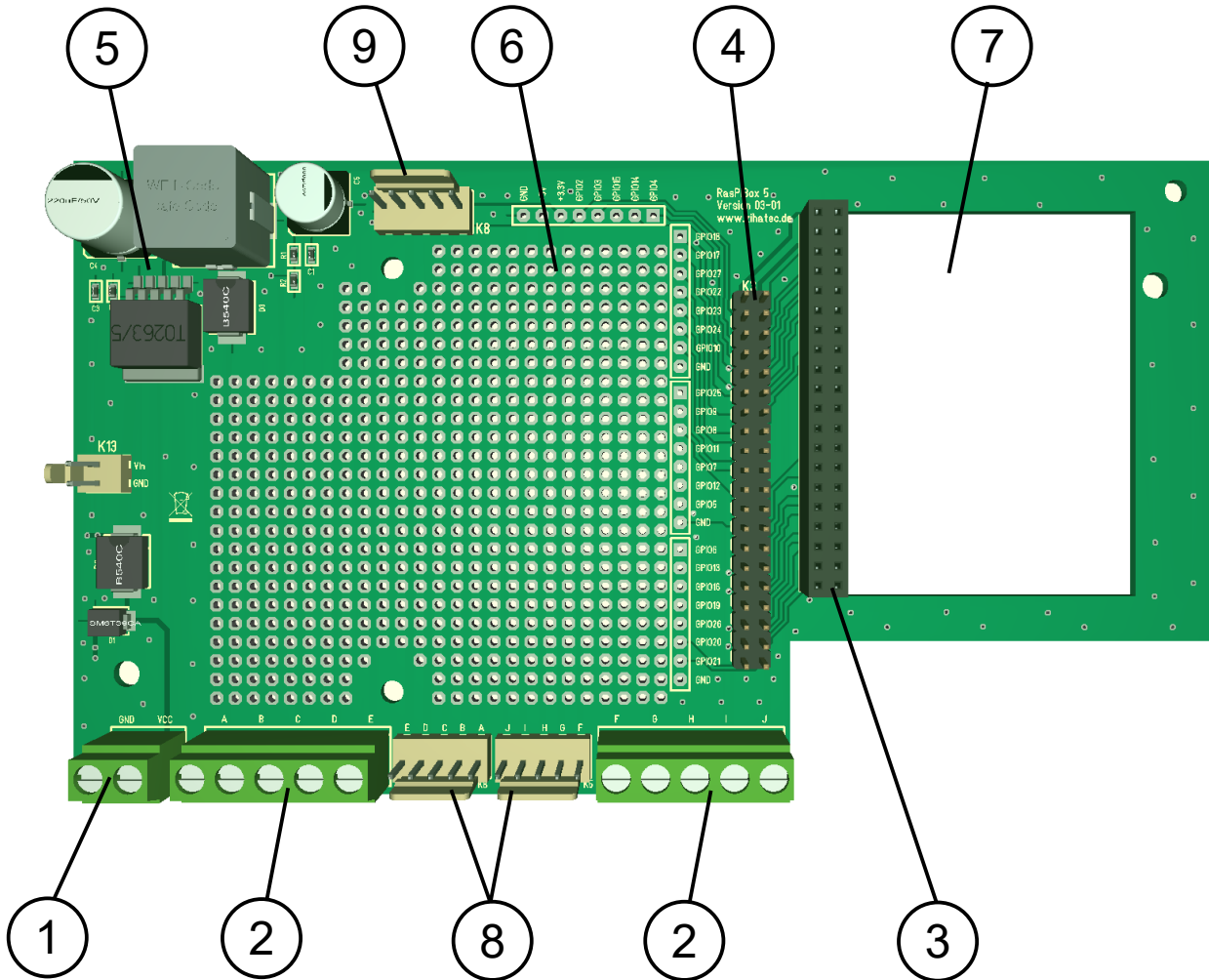


Transparent lid



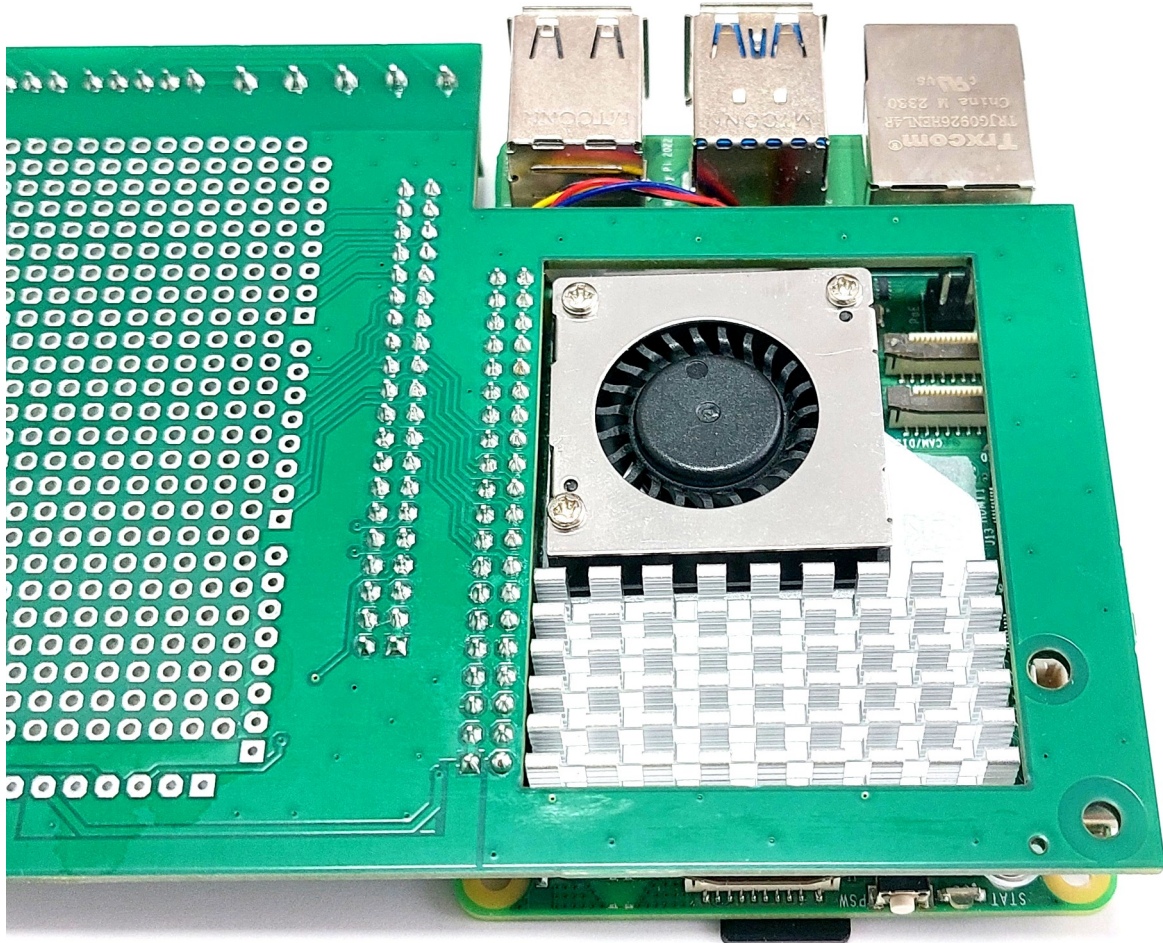
grey lid

Features main board:



- ① Terminal for power supply
- ② Terminals for general purpose
- ③ female header for Raspberry Pi
- ④ male header for optional HAT
- ⑤ voltage regulator
- ⑥ breadboard / proto board area
- ⑦ area for active cooler
- ⑧ internal connector for general purpose terminals
- ⑨ internal connector for OLED Shield

Raspberry Pi5 cooling option:



View of the back of the circuit board with built-in Active Cooler™ for the Raspberry Pi5.