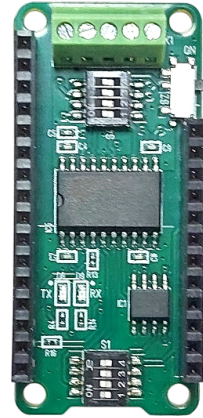
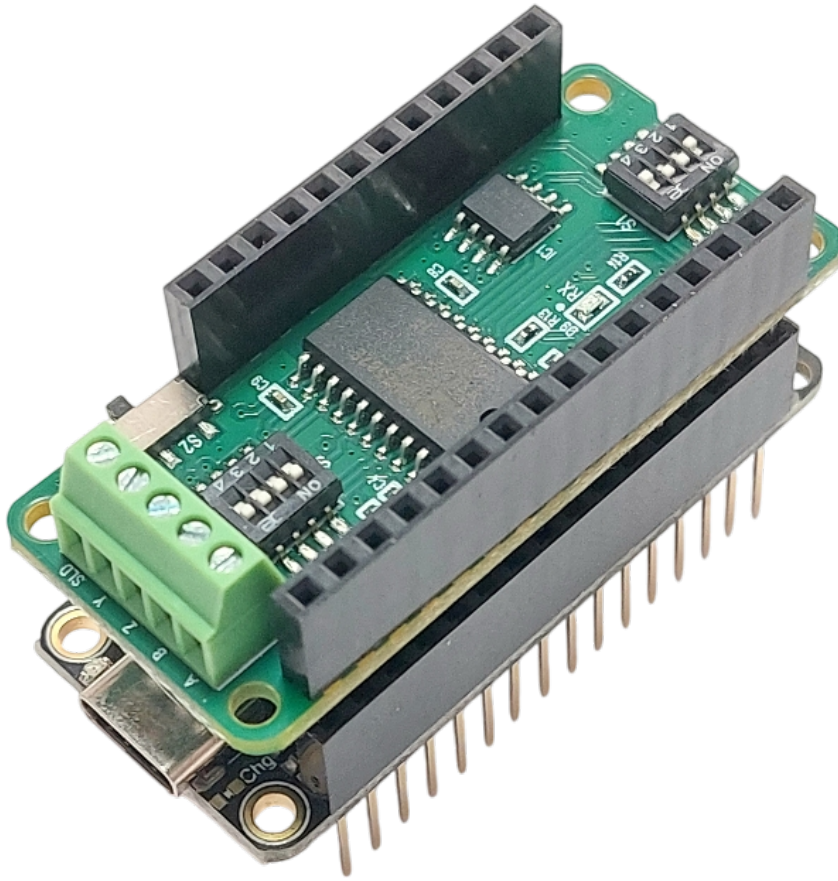


RS422/RS485 Wing



for Feather shaped microcontroller boards



Features:

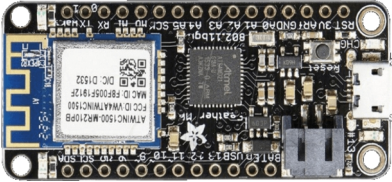
- RS485 mode (half duplex)
- RS422 mode (full duplex)
- Isolated serial interface
- Enhanced ESD protection
- adjustable automatic transceiver switching for RS485 mode
- adjustable control of transceiver/receiver via GPIO pin
- adjustable Pull-Up, Pull-Down und terminating resistors
- Indicator LEDs for RX and TX signals
- many options adjustable via DIP switches
- Optional Stacked headers
- For Feather microcontroller boards and compatible boards

RS422/RS485 Wing

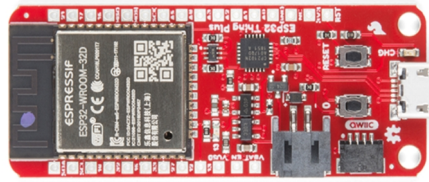


for Feather shaped microcontroller boards

Compatibility :



Adafruit™ Feather boards



Sparkfun™ Thing Plus boards



Particle™ Boron/Argon

Electrical Characteristics:

- Max. Datarate: 500-Kbps
- Number of nodes: 256
- ESD: +/-15kV
- Isolation Rating: 2500 Vrms
- Max Working Voltage: 560 Vpeak (V_{IORM} / VDE)
- Operating Temp.: 0°C to 70°C

Applications:

- Smart Home
- Building Control
- Industrial Control
- Lighting Control
- Video Surveillance
- Access Control

Protocols:

- Modbus RTU
- DMX
- NMEA0183
- Profibus
- etc

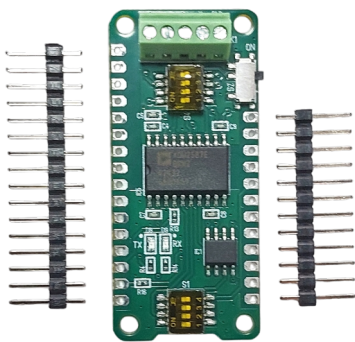
RS422/RS485 Wing



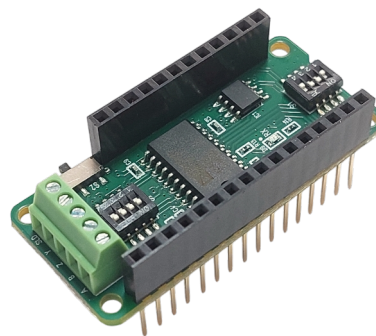
for Feather shaped microcontroller boards

Part number table:

Part-No.	Version
FEAWMBH	With unsoldered male headers
FEAWMBS	With soldered stacked headers

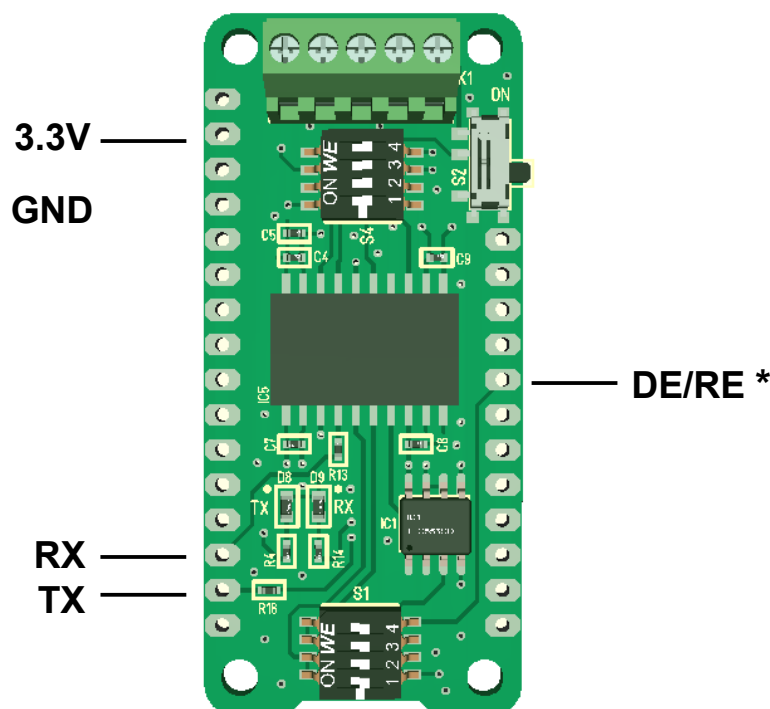


FEAWMBH



FEAWMBS

Used Feather Pins:



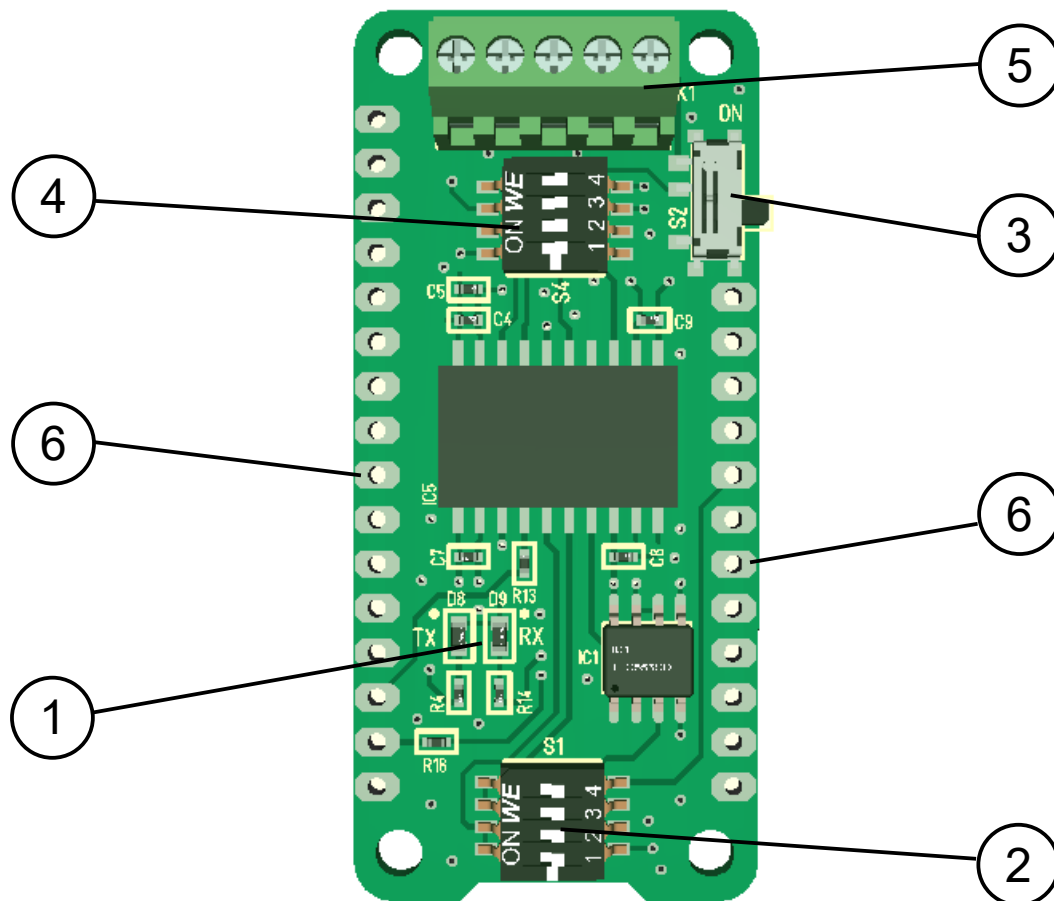
* Only used if SW1.4 is in ON position

RS422/RS485 Wing



for Feather shaped microcontroller boards

Control Elements:



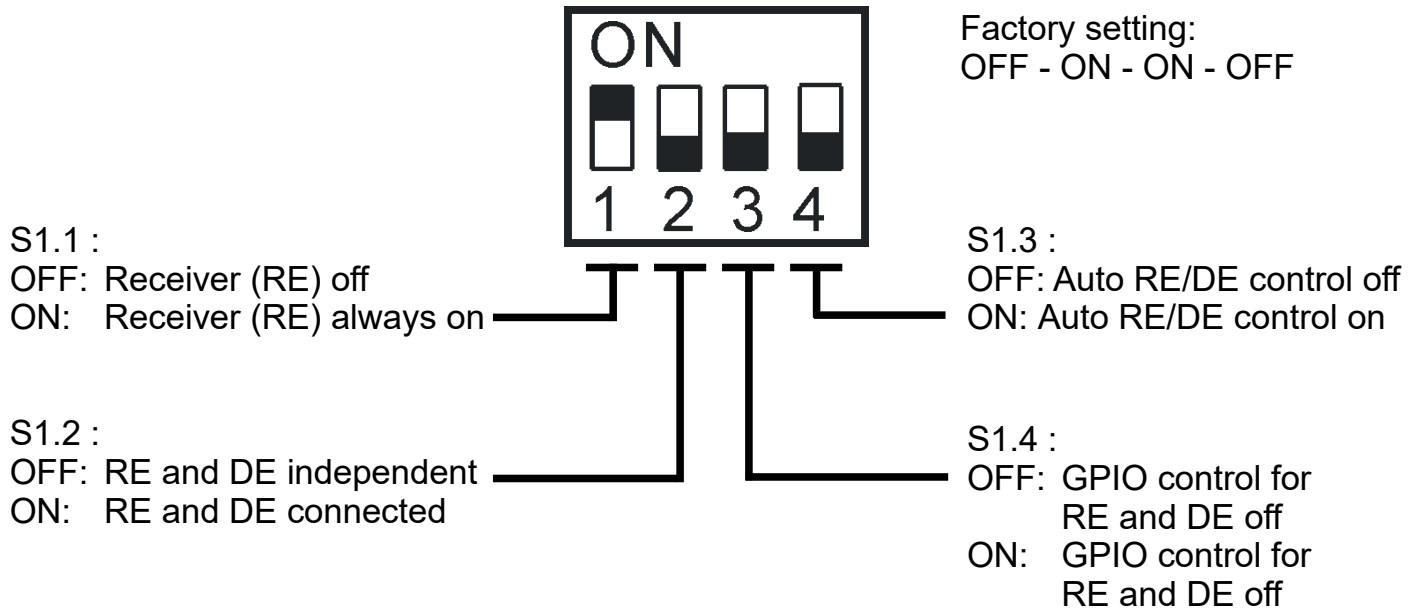
- ① Indicator LEDs
- ② DIP Switch S1
- ③ DIP Switch S2
- ④ DIP Switch S4
- ⑤ terminal block for RS485/RS422
- ⑥ Headers for Feather boards

RS422/RS485 Shield

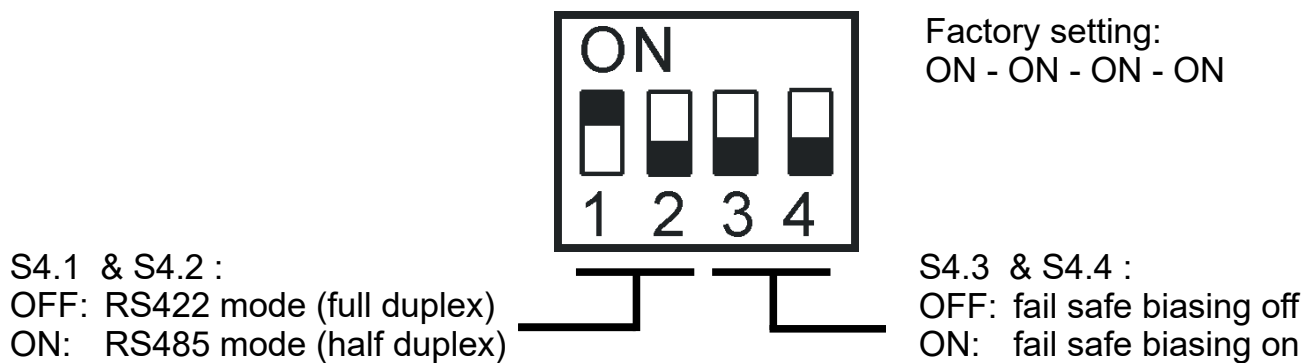


for Feather shaped microcontroller boards

S1 - DIP Switch Configuration – send/receive control



S4 - DIP Switch Configuration – RS422 / RS485 & Pull Ups



S2 – Terminating Resistor

OFF: 120 Ohm terminating resistor off
ON: 120 Ohm terminating resistor on